

KARAN GALA as the ENROLLMENT ENFORCER



#103

The Knowledge Journey

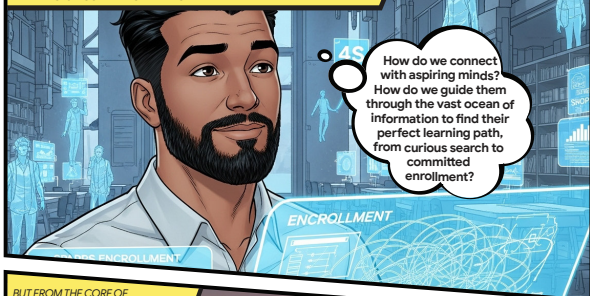
Google Marketing Live

Leadership
Circle

JULY
2025

Created with  Google Gemini

IN THE DYNAMIC WORLD OF EDUCATION, REACHING THE RIGHT LEARNERS AND SHOWCASING TRUE VALUE IS A CONSTANT QUEST. WITH POTENTIAL STUDENTS NAVIGATING THE **SEARCHING, SCROLLING, STREAMING, AND SHOPPING** FOR KNOWLEDGE IN A NON-LINEAR WAY, INSPIRING ENROLLMENT AND LIFELONG LEARNING IS A COMPLEX CHALLENGE.



BUT FROM THE CORE OF
GOOGLE'S KNOWLEDGE
INTELLIGENCE, A SOLUTION AROSE
- THE POWER OF **GOOGLE AI**



THE ENROLLMENT ENFORCER.
EMPOWERED BY GOOGLE AND YOUTUBE, NOW HELPS THEIR
BRAND REACH AND WIN CUSTOMERS ACROSS THE 4S. THESE
PLATFORMS ENABLE THEM TO ATTRACT IDEAL STUDENTS
AND GUIDE THEM TO THEIR LEARNING POTENTIAL.

In Education, connection inspires growth! And with Google and YouTube, we are building our brand to be the **Omnipresent Pathway to Future Success**, reaching students and maximizing ROI across every point of the 4S!

